

Job Name: _____ Location: _____ Date: _____

Purchaser: _____ Engineer: _____

 Submitted to: _____ For Reference Approval Construction

Unit Designation: _____ Schedule No.: _____

GENERAL FEATURES

- Compact side-discharge outdoor unit
- Quiet operation—indoor and outdoor units
- Built-in drain lift mechanism for condensate removal; lifts to 33-7/16 in.
- Wide air flow pattern for better air distribution
- Auto wave airflow in heating mode—unit independently cycles through horizontal and vertical positions for more even heat distribution
- Independent vane adjustment
- Automatic fan speed control
- Self-check function—integrated diagnostics
- Advanced microprocessor control
- Hard-wired, wall-mounted, remote controller (PAR-21MAA)
- Limited warranty: five years on parts and defects and seven years on compressors

OPTIONAL ACCESSORIES
Indoor Unit

- Multi-function Casement (PAC-SH53TM-E)
- Air Outlet Shutter Plates (PAC-SH51SP-E)
- Wireless Signal Receiver (PAR-SA9FA-E)
- Wireless Remote Controller (PAR-FL32MA)
- i-see Sensor Corner Panel (PAC-SA1ME-E)
- High-efficiency (MERV 10) Filter (PAC-SH59KF-E)

Outdoor Unit

- M-NET Adapter (PAC-SF80MA-E)
- Air Outlet Guide (PAC-SG58SG-E)
- Wind Baffle (WB-PA1)

Cooling*

Rated Capacity 18,000 Btu/h
 Minimum Capacity 8,000 Btu/h
 SEER 14.2 Btu/h/W
 Total Input 1,940 W
 Power Supply 208 / 230V, 1-Phase, 60 Hz
 Breaker Size 15 A

* Rating Conditions (Cooling) - Indoor: 80°F (27°C) DB, 67°F (19°C) WB.
 Outdoor: 95°F (35°C) DB, 75°F (24°C) WB.

Voltage

Indoor - Outdoor S1-S2 AC 208 / 230V
 Indoor - Outdoor S2-S3 DC 24V
 Indoor - Remote Controller DC 12V

OPERATING RANGE

		Indoor Intake Air Temp.	Outdoor Intake Air Temp.
Cooling	Maximum	95°F (35°C) DB, 71°F (22°C) WB	115°F (46°C) DB
	Minimum	67°F (19°C) DB, 57°F (14°C) WB	0°F** (-18°C) DB

** With optional wind baffle accessory installed. If not installed, the minimum temperature will be 23°F (-5°C) DB.


Indoor Unit

MCA 1 A
 Fan Motor 0.51 F.L.A.
 Fan Motor Output50 W
 Airflow (Lo - M1 - M2 - Hi) 420 - 490 - 570 - 640 Dry CFM
 390 - 460 - 530 - 600 Wet CFM
 Sound Level (Lo - M1 - M2 - Hi) 28 - 29 - 31 - 32 dB(A)

DIMENSIONS	UNIT INCHES / MM	PANEL INCHES / MM
W	33-1/16 / 840	37-3/8 / 950
D	33-1/16 / 840	37-3/8 / 950
H	10-3/16 / 258	1-3/8 / 35

Weight (Unit/Grille)

lbs. 49 / 13
 kg 22 / 6
 Field Drainpipe Size O.D. 1-1/4" / 32 mm
 Wall-mounted Remote Controller PAR-21MAA
 (See Data Submittal Sheet)

Outdoor Unit

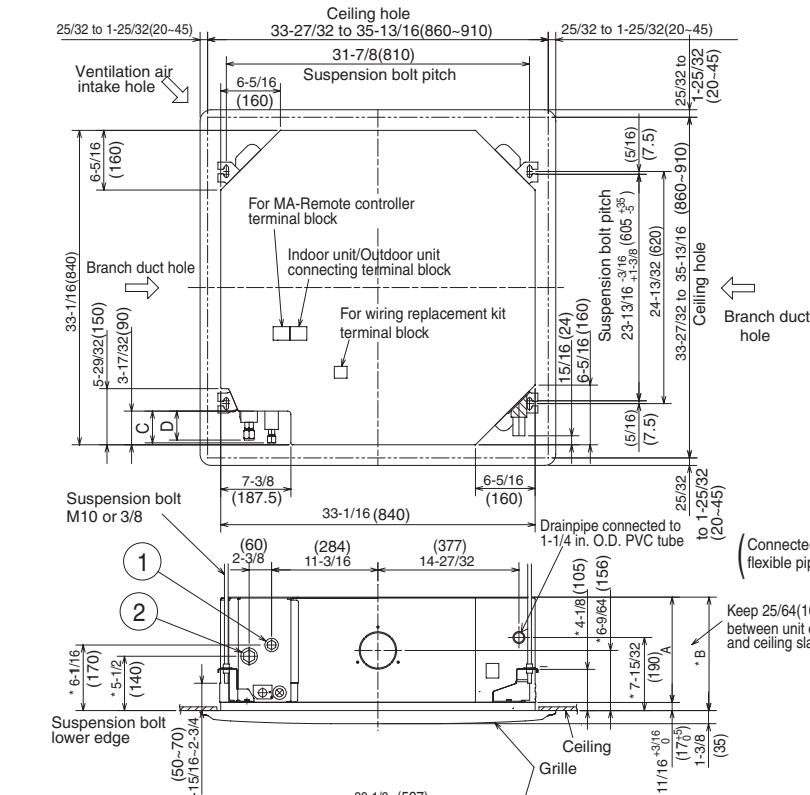
Compressor DC Inverter-driven Rotary
 MCA 13 A
 Fan Motor 0.35 F.L.A.
 Sound Pressure Level46 dB(A)

DIMENSIONS	INCHES / MM
W	31-1/2 / 800
D	13 + 7/8 / 330 + 23
H	23-5/8 / 600

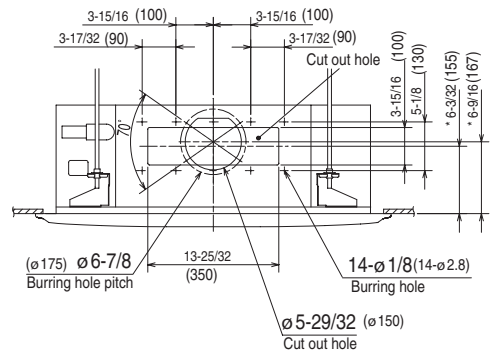
Weight97 lbs. / 44 kg
 Refrigerant Type R410A
 Refrigerant Pipe Size O.D.
 Gas Side 1/2" / 12.7 mm
 Liquid Side 1/4" / 6.35 mm
 Max. Refrigerant Pipe Length 100' / 30 m
 Max. Refrigerant Pipe Height Difference 100' / 30 m
 Connection Method Flared

DIMENSIONS: PLA-A18BA

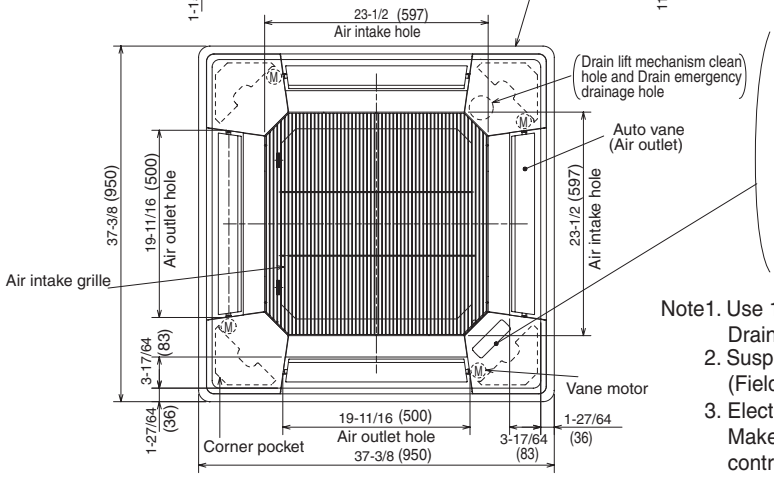
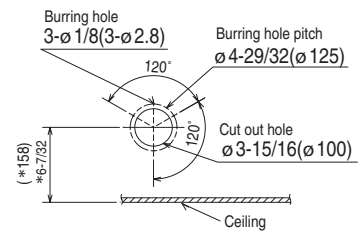
Unit : inch(mm)



Detail connecting of branch duct (nominal 6" round or nominal 4 x 14" rectangular)



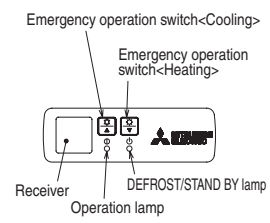
Detail drawing of ventilation air intake connection



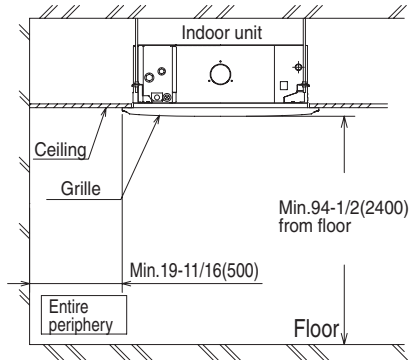
In case of standard grille



In case of wireless remote controller



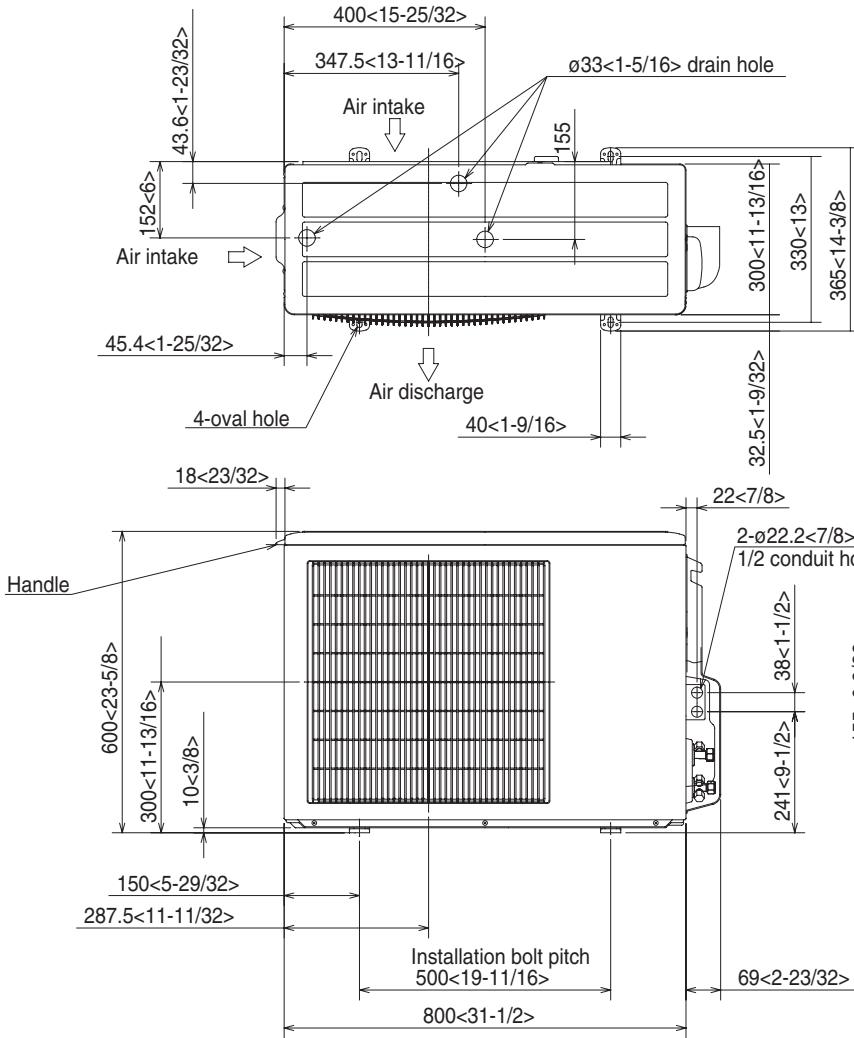
- Note1.** Use 1-1/4 in. O.D. (32) PVCTUBE. Drain lift mechanism is included.
2. Suspension bolt, use M10 or W3/8. (Field supplied)
3. Electrical box may be removed for service purposes. Make sure to slack the electrical wire little bit for control/power wires connection.
4. The height of the indoor unit is adjustable with the grille attached.
5. For the installation of the optional high efficiency filter, the optional multi-functional casement is required.
 1) Add 5-5/16 (135mm) to the dimensions marked with an * in the figures
 2) The optional high efficiency filter required optional multi-functional casement.
6. When installing the branch ducts, be sure to insulate adequately. Otherwise condensation may occur.
7. As for necessary installation/service space, please refer to the bottom left figure.



Models	①	②	A	B	C	D
PLA-A12BA PLA-A18BA	Refrigerant pipe ...ø6.35mm Flared connection ...1/4	Refrigerant pipe ...ø12.7mm Flared connection ...1/2	9-1/2 (241)	10-3/16 (258)	3-5/32 (80)	2-29/32 (74)
PLA-A24BA PLA-A30BA PLA-A36BA PLA-A42BA	Refrigerant pipe ...ø9.52mm Flared connection ...3/8	Refrigerant pipe ...ø15.88mm Flared connection ...5/8	11-1/16 (281)	11-3/4 (298)	3-11/32 (85)	3-1/32 (77)

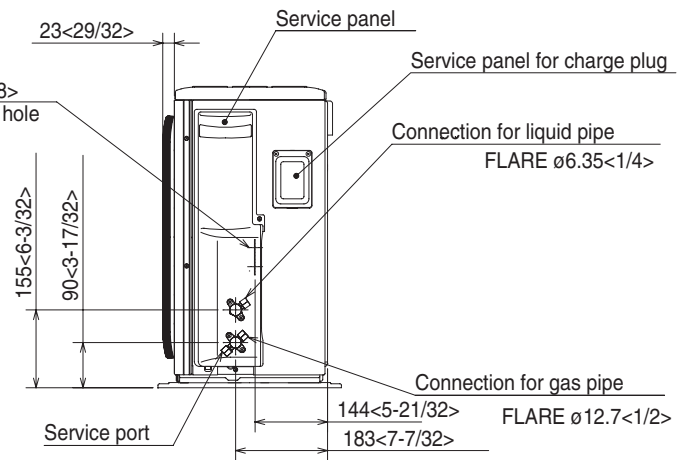
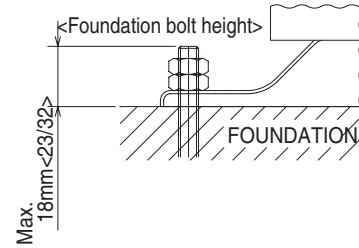
DIMENSIONS: PUY-A18NHA

Unit : mm<inch>

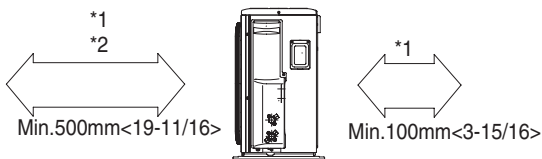
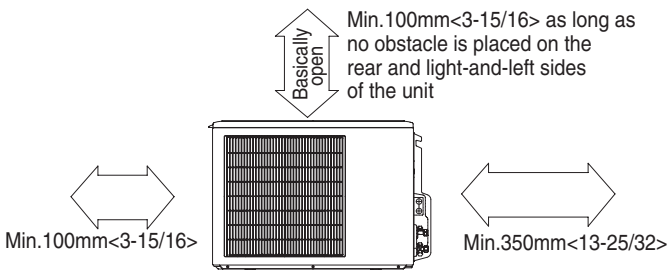


FOUNDATION BOLTS

Please secure the unit firmly with 4 foundation M10<W3/8> bolts. (Bolts, washers and nut must be purchased locally.)



Clearance space needed around the outdoor unit



2 sides should be open in the right, left and rear side.

PIPING-WIRING DIRECTION

Piping and wiring connection can only be made from the back.

Minimum installation space for outdoor unit

If the unit is installed in a place where short cycle can occur, cooling and heating capacity might be reduced by 10%. Using an air outlet guide (PAC-SG58SG-E) will help deflect exhaust air and improve performance.

NOTES



HVAC Advanced Products Division

3400 Lawrenceville Suwanee Rd
Suwanee, GA 30024

Tele: 678-376-2900 • Fax: 800-889-9904

Toll Free: 800-433-4822 (#3)

www.mehvac.com

Specifications are subject to change without notice.