

CITY MULTI – S – Series

Extended Warranty Process*

***It is recommended to use the CITY MULTI Startup Process document in combination with this document.**

I. Purpose

- A. The S-Series Extended Warranty Process is a guide to completing the procedure for extended parts and compressor warranty.
- B. Items that must be submitted to apply for extended warranty are:
 - 1. Diamond System Builder file (as built)
 - 2. System Information
 - a. This will allow us to understand how the system is configured at start up.
 - 3. A one hour Maintenance tool (M-Tool) run in a specific operational pattern, as shown in section IV of this document, for each system being submitted.

II. Diamond System Builder (DSB)

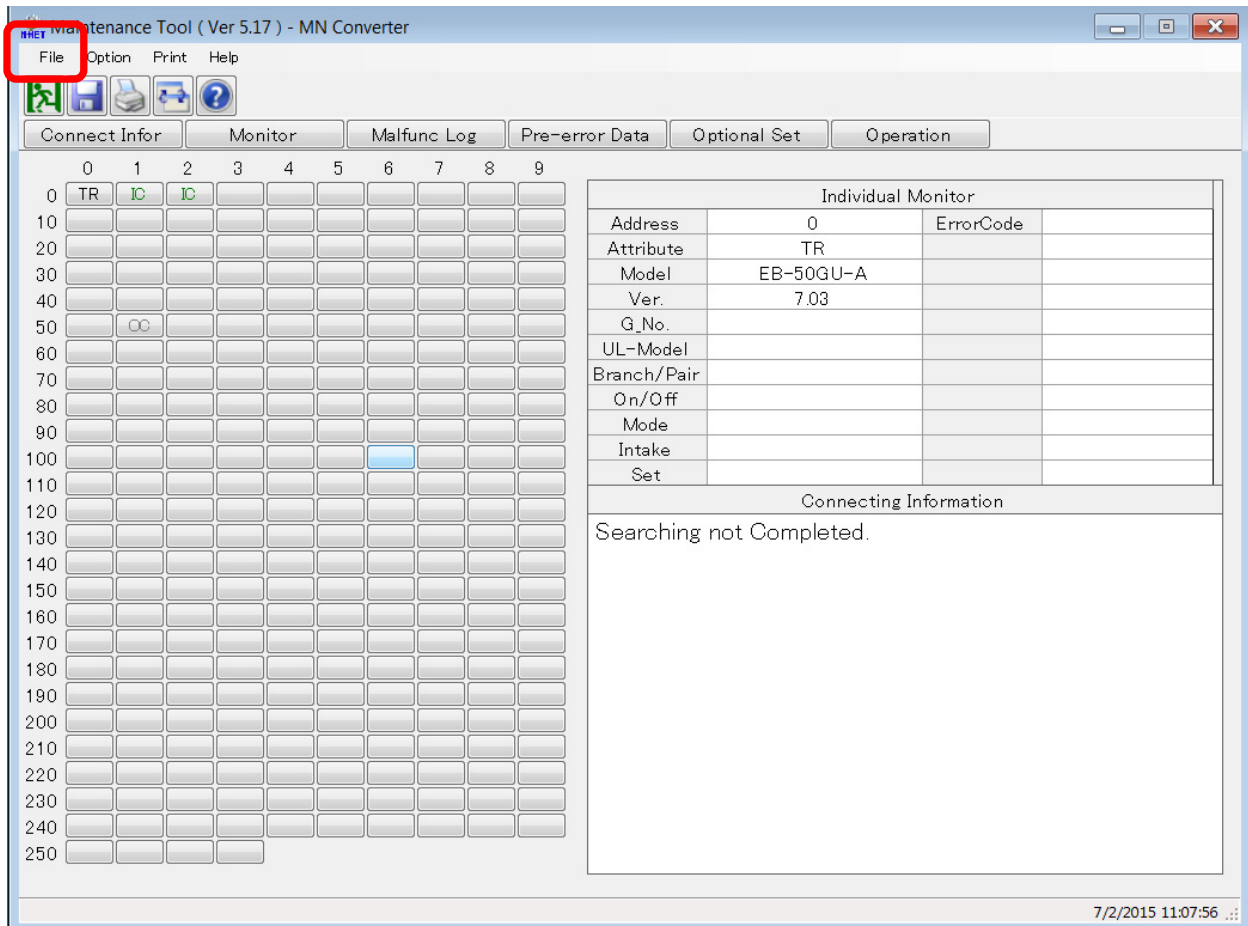
- A. DSB has fields that will allow input of items such as serial numbers, installing contractors, design engineer and more.
 - 1. Each field with a red asterisk (*) beside it is a required field and will need appropriate information before being submitted.
- B. The DSB file must be complete and truly represent how the system is installed including correct piping lengths and port assignments (as built). Remember the M-Tool file you submit shows the indoor model and addresses connected. To ensure your application is not rejected, check that the M-Tool record and DSB are in fact reflecting the same information.
- C. When any system component is selected there are areas to enter refrigerant piping length, unit height, unit address, connected refrigerant port (R2 systems only), and unit serial number.
- D. There is a tab in the Project Properties Box marked “Extended Warranty”, all of the fields in this box marked with the red asterisk (*) must be completed.

- E. M-Tool run time and system information files are to be attached to the DSB in the Project Properties Box under the “Extended Warranty” tab.

III. System Information

A. System information

1. For S-Series systems, once all addresses are correct, the information can be saved.
2. System information must be saved and submitted. Be sure all information is correct.
 - a. M-Tool may take several minutes to finish its system mapping process before data can be saved.
3. Once all addresses are correct the information can be saved.
 - a. Select **File** at the top left of the grid screen. Then click **Save System Info**.



- b. The information will save and store in the **Offline Analyze** section of Maintenance Tool.
 1. Offline Analyze will be one of the options when you first open M-Tool on the Select Monitor Mode Screen.
 2. The steps for retrieving the information will be covered in section V.

IV. One Hour Monitor Record

A. Record all indoor units in **Test Run**. (Refer to City Multi Startup process Document)

1. System must be in either **Heating** or **Cooling** (all indoor units in the same mode) for a minimum of one hour.
2. Must be in **Ordinary Ctrl Mode** (not Initial).
3. All indoor and outdoor units must stay in operational (thermal on) during Test run. Note that all controls should be “locked out” to prevent scheduled or occupant changes that can alter the system during this time. When using the thermostat interface (**PAC-US444CN-1**) it will not be possible to force test mode, so setting the lowest set point for Cool or highest set point for Heat is recommended. If you cannot keep all units in thermal on for the recording period, please contact your technical Mitsubishi support representative.

7/2/2015 11:11:27

PUMY-P100-140Y/VHM/36-48NHMU Adres:051 Ver53.00 52C 2184 SV1(A)(B)(C) demand
 1 0 0 0 0

OPERATION MODE=CoolingF/Hz=63 TH4 =133.7 TH6 = 43.7 TH3 = 80.8 TH7 = 77.0
 FAN =8 TH8 =111.9 63HS=332.8 VDC(V)=335.0

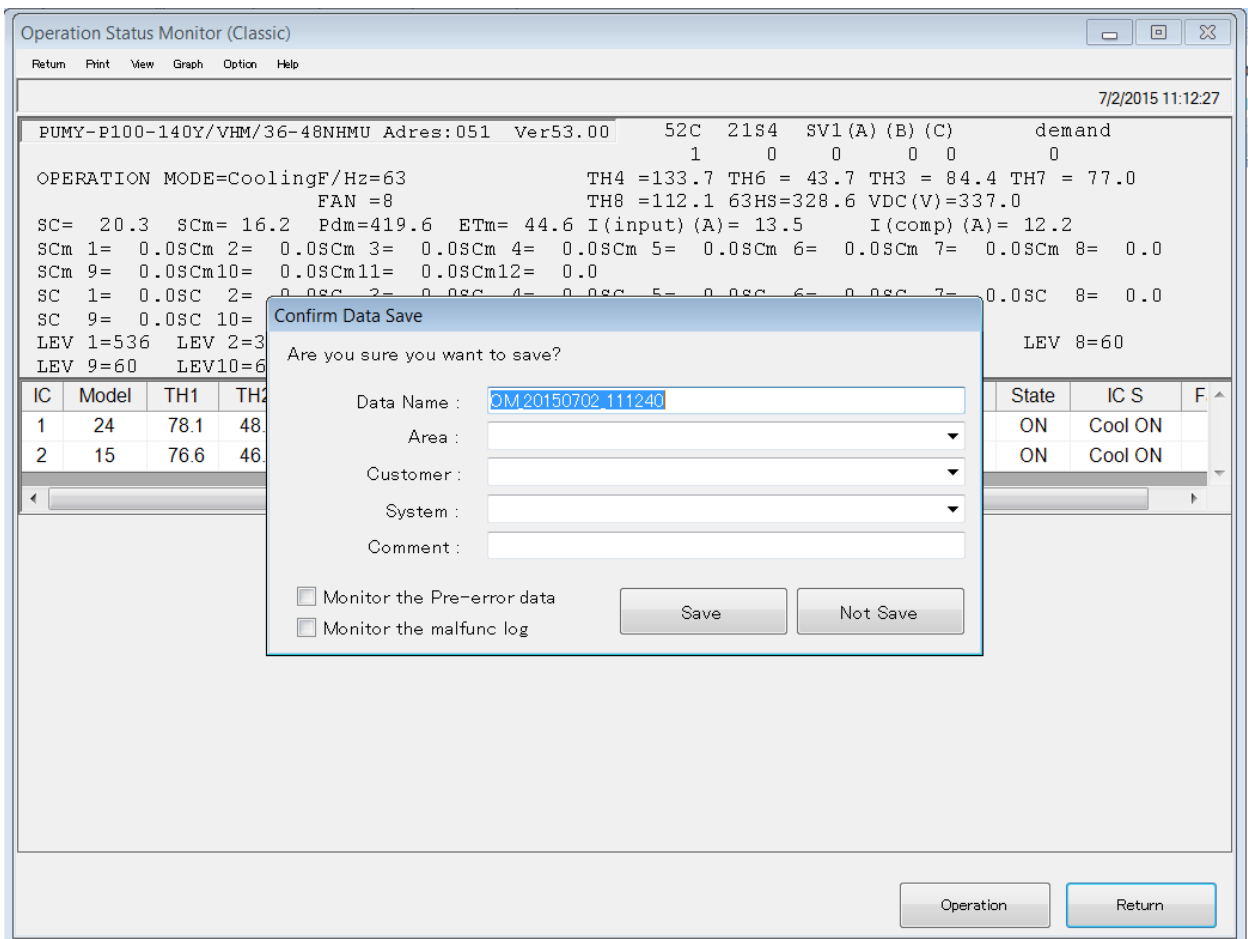
SC= 23.9 SCm= 16.2 Pdm=419.6 ETm= 44.6 I(input)(A)= 13.6 I(comp)(A)= 12.3
 SCm 1= 0.0SCm 2= 0.0SCm 3= 0.0SCm 4= 0.0SCm 5= 0.0SCm 6= 0.0SCm 7= 0.0SCm 8= 0.0
 SCm 9= 0.0SCm10= 0.0SCm11= 0.0SCm12= 0.0
 SC 1= 0.0SC 2= 0.0SC 3= 0.0SC 4= 0.0SC 5= 0.0SC 6= 0.0SC 7= 0.0SC 8= 0.0
 SC 9= 0.0SC 10= 0.0SC 11= 0.0SC 12= 0.0
 LEV 1=536 LEV 2=379 LEV 3=60 LEV 4=60 LEV 5=60 LEV 6=60 LEV 7=60 LEV 8=60
 LEV 9=60 LEV10=60 LEV11=60 LEV12=60

| IC | Model | TH1 | TH2 | TH3 | TH4/HU | SH/SC | Li | TO | Save | O/F | Mode | State | IC S | F |
|----|-------|------|------|------|--------|-------|-----|------|------|-----------|---------|-------|---------|---|
| 1 | 24 | 78.1 | 48.4 | 46.9 | 49.1 | 0.7 | 536 | 67.0 | 100 | Operating | Cooling | ON | Cool ON | |
| 2 | 15 | 76.6 | 46.2 | 48.4 | - | 1.4 | 379 | 67.0 | 100 | Operating | Cooling | ON | Cool ON | |

|||

Operation Return

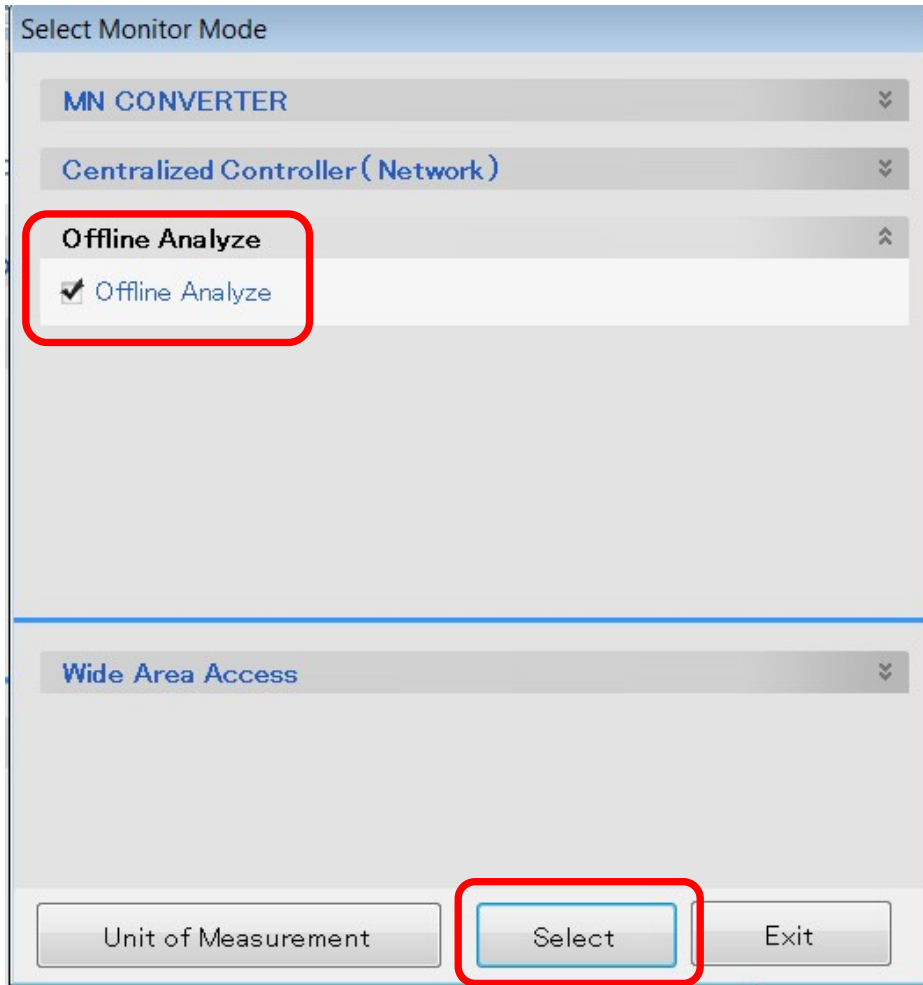
- B. When exiting the **Monitor** screen, you will be prompted to **Confirm Data Save**
1. You are also given the option to modify the **Data Name**, and add comments and customer information.
 - a. It is recommended that you use the **Job Name** in the **Data Name** field and if there are multiple systems onsite to put the **system designation or number** in the **Comment Field**.
- C. The saved data will store in the **Offline Analyze** section of M-Tool.
1. Changing the name and adding comments will make location of the files faster.



V. Retrieving Saved Maintenance Tool Data

- A. Saved data will store in the **Offline Analyze** section of M-Tool.
1. Here you can highlight the **system information** and **runtime data** and export it to a location where it can be easily found.

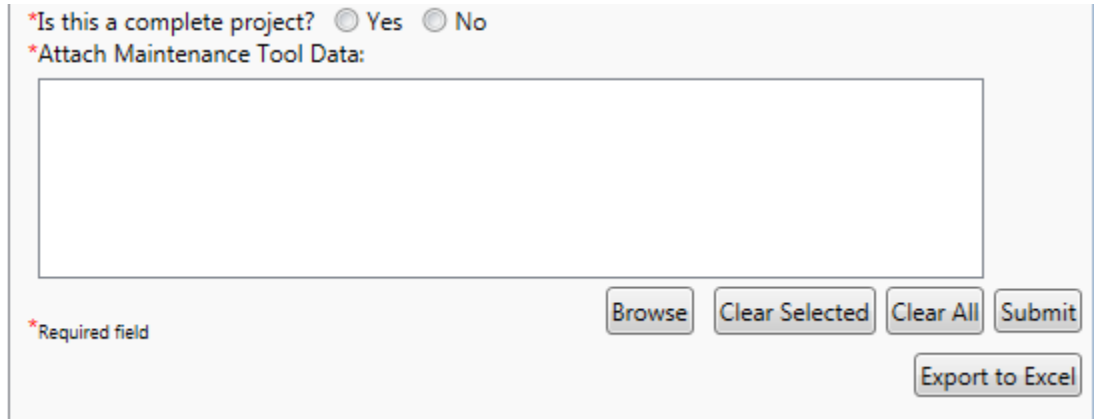
2. A folder, where all saved information can be stored, should be created.
- B. Start Maintenance Tool and select “**Offline Analyze**”, make sure the box is checked and click select at the bottom of the window.



- C. Click the “**Monitor**” button, select the file to be exported and select “**Export**” button at bottom of the window to export the run time data.
1. Another window will open giving you the option to select the destination folder created in step V.A.2 above.
- D. Click the “**System Info**” button, select the file to be exported and select “**Export**” button at the bottom of the window to export the system information data.
1. Just as above a window will open giving the option to select the destination folder created in step V.A.2 above.

VI. Submitting Extended Warranty Files

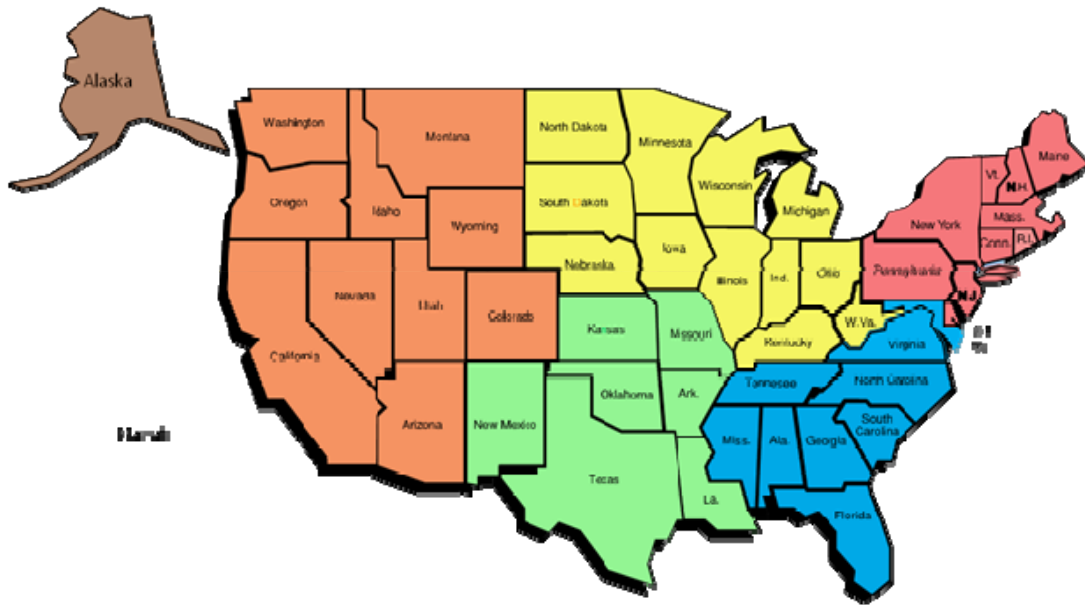
- A. Attach the Exported M-Tool System Information and Runtime files to the DSB in the extended warranty tab in the project properties section.



The screenshot shows a web form with the following elements:

- A question: "*Is this a complete project?" with radio buttons for "Yes" and "No".
- A label: "*Attach Maintenance Tool Data:"
- A large empty rectangular box for file attachment.
- A row of buttons: "Browse", "Clear Selected", "Clear All", and "Submit".
- A button labeled "Export to Excel" located below the "Submit" button.
- A red asterisk and the text "*Required field" located to the left of the "Browse" button.

1. Select "**Browse**" and navigate to the folder created in step V.A.2 to select the files to attach.
 2. Once files have been attached to the As Built DSB file select "**Submit**" to send the project in for review.
 - a. If there is any missing information the DSB program will give a notification of errors to correct before the file can be properly submitted.
- B. For additional information on the DSB submission process please view our **Extended Warranty DSB** Tech Tip on www.mylinkdrive.com under the Tech Tips section.
- C. The following data must be submitted
1. Diamond System Builder file (As Built)
 2. Maintenance Tool System Information
 3. Maintenance Tool Run Time Data (Minimum 60 Minutes for each system)
- D. The data **MUST** be submitted within **45 Days** of **Startup**.
- E. The Extended Warranty will **NOT** take effect until a warranty authorization number has been issued.
- F. If you have any questions regarding collection of data and submission you can contact the area service team for your state at the email addresses listed below.



northeastwarranty@hvac.me.com

ME, VT, NH, MA, CT, RI, NY, NJ, PA, DE

southwarranty@hvac.me.com

MD, VA, DC, TN, NC, SC, MS, AL, GA, FL

centralexwarranty@hvac.me.com

ND, SD, NE, MN, WI, MI, IA, IL, IN, OH, WV, KY

southwestwarranty@hvac.me.com

NM, EX, OK, LA, AR, MO, KS

westwarranty@hvac.me.com

MT, WY, ID, CO, AK, WA, OR, CA, NV, UT, AZ, HI

internationalexwarranty@hvac.me.com